

PARACHUTE INDONESIA

AX8-PI HOT AIR BALLOON

PARACHUTE ENGINEERING

NOT FOR SCALE	PREPARED BY: R. ADIMURSITO, M.eng, CA	DATE:		PARACHUTE INDONESIA JL. Gading Griya Lestari Raya Blok H1 no. 43 Sukapura, Jakarta Utara 14140, Indonesia	PARACHUTE INDONESIA AX8-PI	
	CHECKED BY:	DATE:			DRAWING:	REVISION:
	QC APPROVED:	DATE:			SCALE: NONE	SHEET:
	CONTRACT NO:					

PARACHUTE INDONESIA

INDEX:

pg.	1	COVER PAGE
pg.	2	INDEX
pg.	3	SPLICED TOP VIEW
pg.	4	MAIN BODY SIDE VIEW
pg.	5	GORE SECTION
pg.	6	GORE SEAMS
pg.	7	TOP & BOTTOM GORE SEAMS
pg.	8	GORE TO LINE ATTCHMENT

NOT FOR SCALE

PREPARED BY:
R. ADIMURSITO, M.eng, CA

DATE:

CHECKED BY:

DATE:

QC APPROVED:

DATE:

CONTRACT NO:

PARACHUTE INDONESIA
JL. Gading Griya Lestari Raya Blok H1 no. 43
Sukapura, Jakarta Utara 14140,
Indonesia

PARACHUTE INDONESIA
AX8-PI

DRAWING:

REVISION:

SCALE: NONE

SHEET:

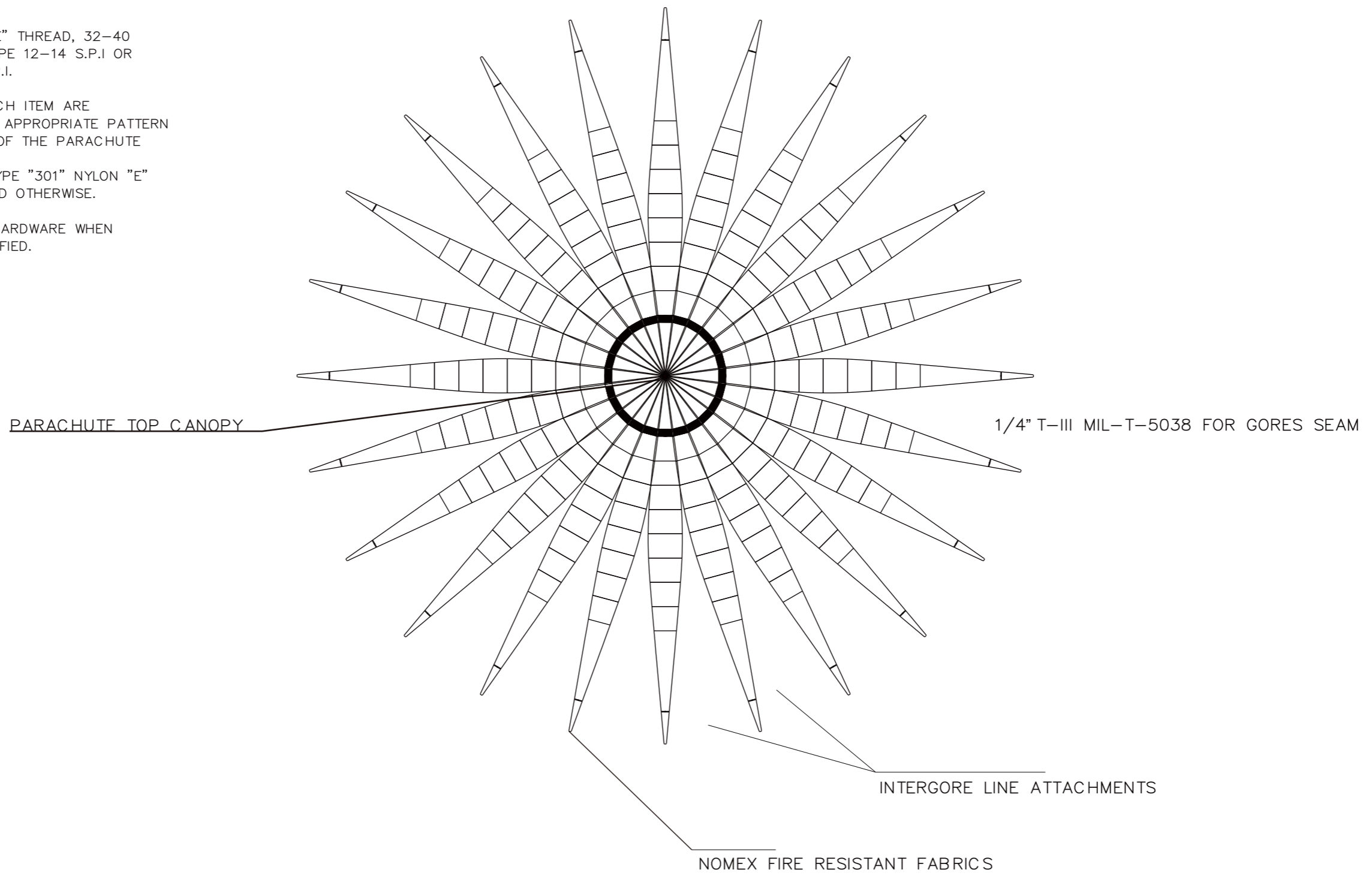
NOTES:

1. BARTACK: NYLON "E" THREAD, 32-40 STICHES OR "304" TYPE 12-14 S.P.I OR "308" TYPE, 7-10 S.P.I.

2. DIMENSIONS OF EACH ITEM ARE DETERMINED BY THE APPROPRIATE PATTERN PIECE FOR THE SIZE OF THE PARACHUTE

3. ALL STICHING IS TYPE "301" NYLON "E" THREAD UNLESS NOTED OTHERWISE.

4. STAINLESS STEEL HARDWARE WHEN AVAILABLE AND CERTIFIED.



SPLICED TOP VIEW

NOT FOR SCALE	PREPARED BY: R. ADIMURSITO, M.Eng.	DATE:	PARACHUTE INDONESIA JL. Gading Griya Lestari Raya Blok H1 no. 43 Sukapura, Jakarta Utara 14140, Indonesia	SPLICED TOP VIEW	
	CA CHECKED BY:	DATE:		DRAWING:	REVISION:
	QC APPROVED:	DATE:		SCALE: NONE	SHEET:
	CONTRACT NO:				

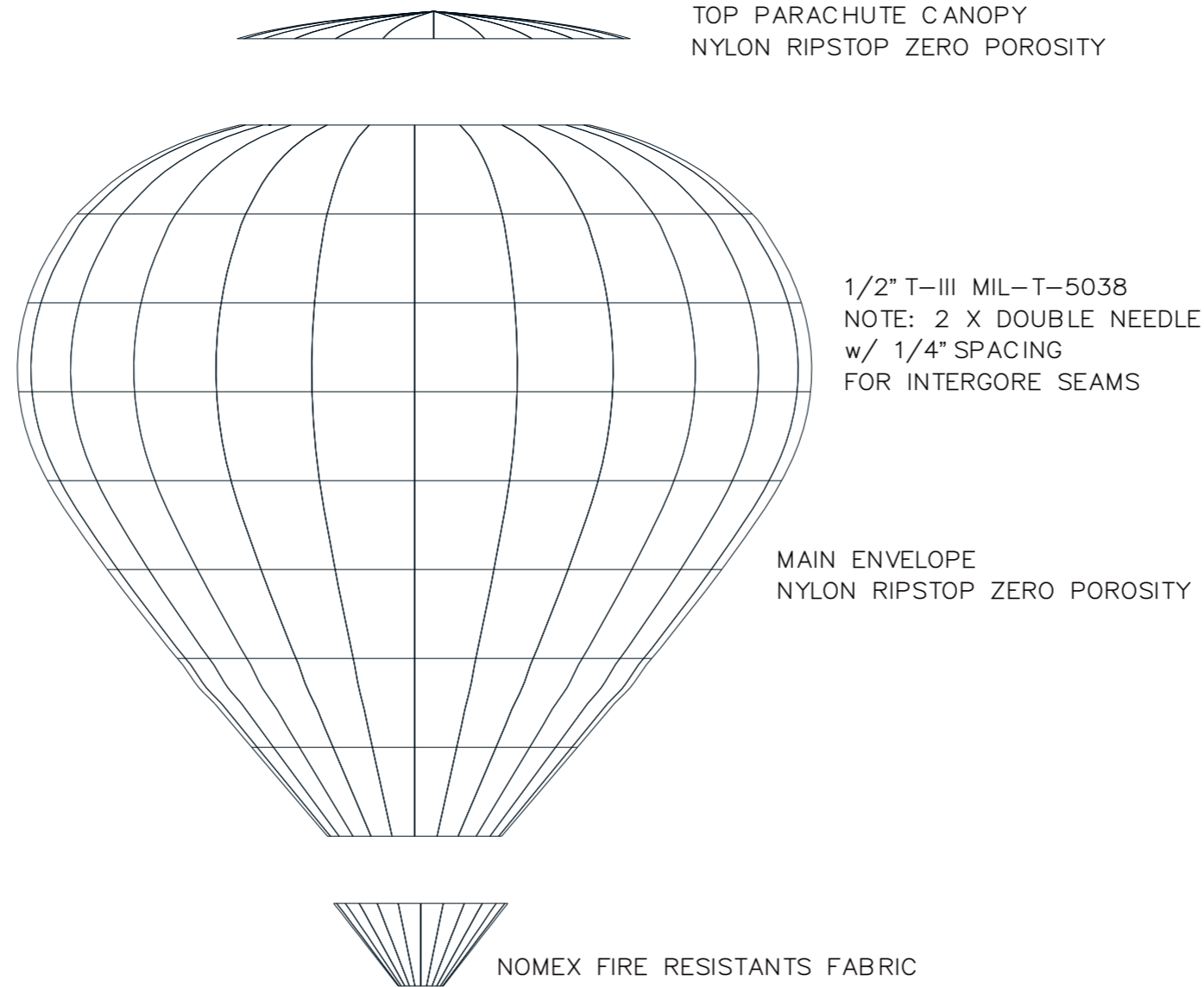
NOTES:

1. BARTACK: NYLON "E" THREAD, 32-40 STICHES OR "304" TYPE 12-14 S.P.I OR "308" TYPE, 7-10 S.P.I.

2. DIMENSIONS OF EACH ITEM ARE DETERMINED BY THE APPROPRIATE PATTERN PIECE FOR THE SIZE OF THE PARACHUTE

3. ALL STICHING IS TYPE "301" NYLON "E" THREAD UNLESS NOTED OTHERWISE.

4. STAINLESS STEEL HARDWARE WHEN AVAILABLE AND CERTIFIED.



SIDE VIEW

NOT FOR SCALE

PREPARED BY: R. ADIMURSITO, M.Eng,	DATE:
CHECKED BY:	DATE:
QC APPROVED:	DATE:
CONTRACT NO:	

PARACHUTE INDONESIA
JL. Gading Griya Lestari Raya Blok H1 no. 43
Sukapura, Jakarta Utara 14140,
Indonesia

MAIN BODY SIDE VIEW	
DRAWING:	REVISION:
SCALE: NONE	SHEET:

NOTES:

1. BARTACK: NYLON "E" THREAD, 32-40 STICHES OR "304" TYPE 12-14 S.P.I OR "308" TYPE, 7-10 S.P.I.

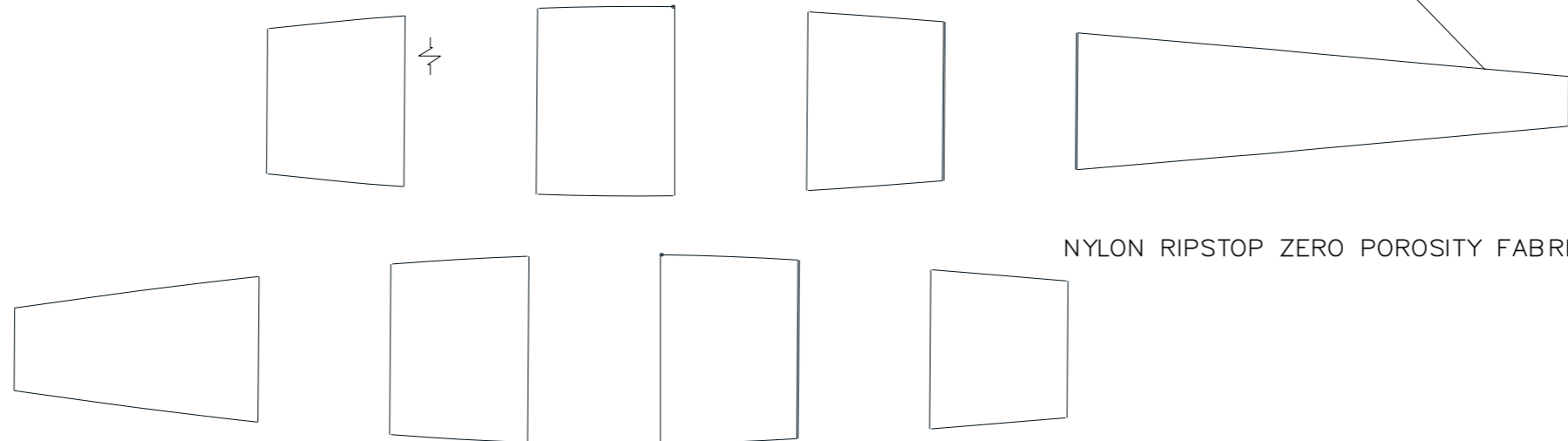
2. DIMENSIONS OF EACH ITEM ARE DETERMINED BY THE APPROPRIATE PATTERN PIECE FOR THE SIZE OF THE PARACHUTE

3. ALL STICHING IS TYPE "301" NYLON "E" THREAD UNLESS NOTED OTHERWISE.

4. STAINLESS STEEL HARDWARE WHEN AVAILABLE AND CERTIFIED.

SECTION SEAMS
NOTE: FOLD EDGE UNDER 1/2" PLACE 3/4" T-III INTO FOLD 2 X DOUBLE NEEDLE w/ 1/4" SPREAD

INTERGORE SEAMS
1" T-III MIL-T-5038
NOTE: 2 X DOUBLE NEEDLE



NYLON RIPSTOP ZERO POROSITY FABRIC

NOT FOR SCALE

PREPARED BY:
R. ADIMURSITO, M.Eng.

DATE:

CA
CHECKED BY:

DATE:

QC APPROVED:

DATE:

CONTRACT NO:

PARACHUTE INDONESIA
JL. Gading Griya Lestari Raya Blok H1 no. 43
Sukapura, Jakarta Utara 14140,
Indonesia

SECTION GORE

DRAWING:

REVISION:

SCALE: NONE

SHEET:

NOTES:

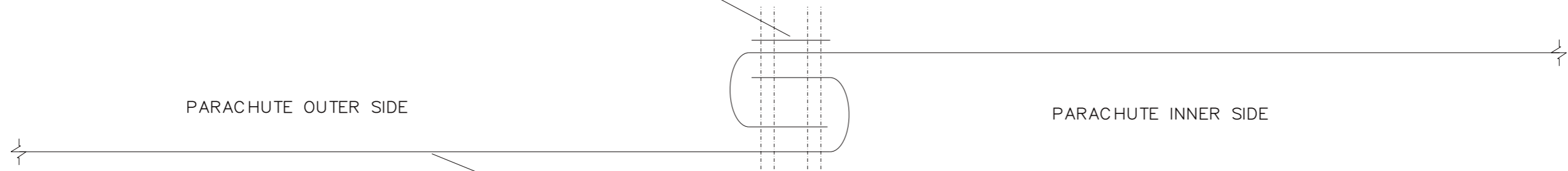
1. BARTACK: NYLON "E" THREAD, 32-40 STICHES OR "304" TYPE 12-14 S.P.I OR "308" TYPE, 7-10 S.P.I.

2. DIMENSIONS OF EACH ITEM ARE DETERMINED BY THE APPROPRIATE PATTERN PIECE FOR THE SIZE OF THE PARACHUTE

3. ALL STICHING IS TYPE "301" NYLON "E" THREAD UNLESS NOTED OTHERWISE.

4. STAINLESS STEEL HARDWARE WHEN AVAILABLE AND CERTIFIED.

1/2" T-III MIL-T-5038
NOTE: 2 X DOUBLE NEEDLE
w/ 3/16" SPACING



PARACHUTE OUTER SIDE

PARACHUTE INNER SIDE

PIA-C-44378-TYPE-4
RIPSTOP 0.5-3.0

NOT FOR SCALE

PREPARED BY:
R. ADIMURSITO, M.Eng.

DATE:

CA
CHECKED BY:

DATE:

QC APPROVED:

DATE:

CONTRACT NO:

PARACHUTE INDONESIA
JL. Gading Griya Lestari Raya Blok H1 no. 43
Sukapura, Jakarta Utara 14140,
Indonesia

GORE SEAMS

DRAWING:

REVISION:

SCALE: NONE

SHEET:

NOTES:

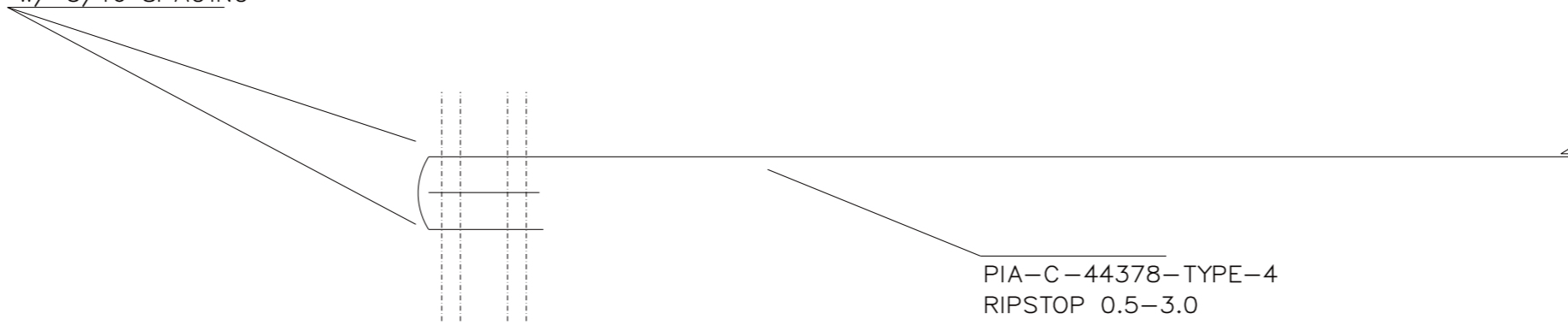
1. BARTACK: NYLON "E" THREAD, 32-40 STICHES OR "304" TYPE 12-14 S.P.I OR "308" TYPE, 7-10 S.P.I.

2. DIMENSIONS OF EACH ITEM ARE DETERMINED BY THE APPROPRIATE PATTERN PIECE FOR THE SIZE OF THE PARACHUTE

3. ALL STICHING IS TYPE "301" NYLON "E" THREAD UNLESS NOTED OTHERWISE.

4. STAINLESS STEEL HARDWARE WHEN AVAILABLE AND CERTIFIED.

1" T-III MIL-T-5038
NOTE: 2 X DOUBLE NEEDLE
w/ 3/16" SPACING



NOT FOR SCALE

PREPARED BY:
R. ADIMURSITO, M.Eng.

DATE:

CA
CHECKED BY:

DATE:

QC APPROVED:

DATE:

CONTRACT NO:

PARACHUTE INDONESIA
JL. Gading Griya Lestari Raya Blok H1 no. 43
Sukapura, Jakarta Utara 14140,
Indonesia

TOP AND BOTTOM
GORE SEAMS

DRAWING:

REVISION:

SCALE: NONE

SHEET:

NOT FOR SCALE

PREPARED BY: R. ADIMURSTO, Meng, CA	DATE:
CHECKED BY:	DATE:
QC APPROVED:	DATE:
CONTRACT NO:	

PARACHUTE INDONESIA
Jl. Gading Gria Lestari Raya Blok HI no. 43,
Sukajaya, Jakarta Utara 14140,
Indonesia

LINE TO GORE
ATTACHMENT

NOTES:

1. BARTACK: NYLON "E" THREAD, 32-40 STITCHES OR "304" TYPE, 12 -14 S.P.I. OR "308" TYPE, 7-10 S.P.I.
2. DIMENSIONS OF EACH ITEM ARE DETERMINED BY THE APPROPRIATE PATTERN PIECE FOR THE SIZE OF THE PARACHUTE.
3. ALL STITCHING IS TYPE "301" NYLON "E" THREAD UNLESS NOTED OTHERWISE.
4. STAINLESS STEEL HARDWARE WHEN AVAILABLE AND CERTIFIED.

